



Environmental Data Exchange Node (e-Node 2008)

Key Features:

- Supports both Exchange Network v1.1 and v2.0 Node Specifications
- Microsoft.NET and JAVA (J2EE) versions available
- Supports Oracle & SQL Server backend database
- Node Dashboard: centralized Node Administration
- Service Orchestration: link tasks and services together to address business needs
- Multiple XML generation options:
 - XML Mapper
 - Stored Procedure
 - Custom .NET/Java Code

EnfoTech's Environmental Data Exchange Node (e-Node 2008) is the latest offering of the Web services data exchange portal that enables Exchange Network partners to share environmental information under the Environmental Information Exchange Network. The e-Node 2008 builds upon its past success to provide new innovative tools that make data flow development, administration, and sharing between partners much easier, while upgrading the core architecture to support both Node 1.1 and Node 2.0 specifications.

Major Features

Standard Node Functions

- New** > Complies with the latest Exchange Network Node specifications (supports both v.1.1 and v.2.0)
- > Bundled Node and Node Client provides both Web Service Provider and Requester capabilities
- > Full NAAS Integration:
 - NAAS accounts & policies created/ maintained directly through eNode
 - Supports Local Node User accounts as alternative to NAAS
- > Flexible Task Scheduler provides ability to execute tasks based on:
 - Pre-defined schedule
 - On-demand execution
- > Configurable email notification:
 - Define events triggers and email recipients when event occurs
- > Native data access support for Oracle and SQL Server

Node Administration

- New** > New Dashboard with user-configurable components throughout
- New** > Exchange Network Discovery Service (ENDS) Registration Tool allows administrators to register data publishing services
- > Comprehensive Node logging:
 - Service requests & responses
 - Task monitoring

Data Flow Administration

- > Configurable data flow administration to accommodate all existing and future Exchange Network data flows.
- > Ability to connect a series of activities (e.g. XML generation, logging, email distribution) into a single data flow.
- New** > Resulting "Data flows configurations" are stored as BPEL-compatible XML that can be easily shared from one eNode to another (even across .NET and Java implementations)
- New** > Optional XSLT-driven "Review & Approve" page to review & approve files prior to submission to EPA.
- > Admin Utility allows Node Admins to delegate Data Flow creation and management to Data Flow Admins
- > Multi-threading option available for all steps in all data flows

XML Composition / Parsing

- New** > Bundled with XML generation\parsing engine allows data flow developers to compose or parse XML documents without writing custom NET/Java code
- > Traditional Stored Procedure-based or code-based XML Composition / Parsing options still supported

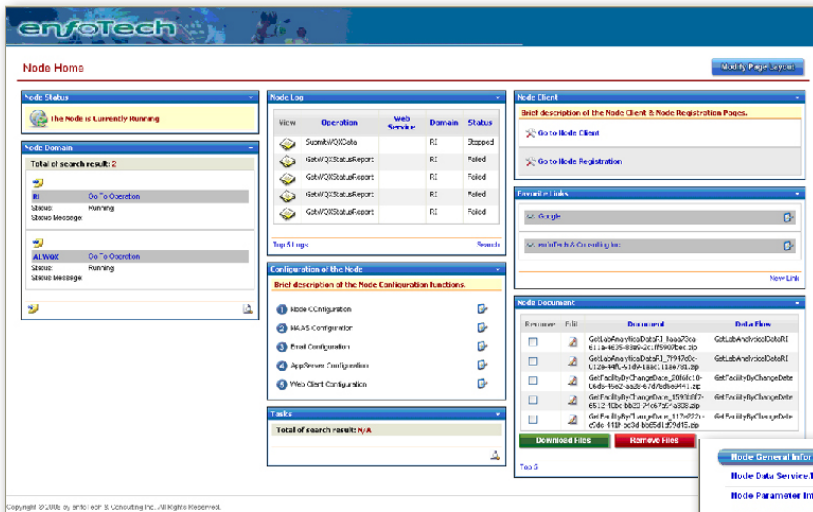
Ease of Use

- > Easy to install
- > Full documentation: Install Guide, Admin Guide, Data Flow Developer's Guide

For more information about the Exchange Network and Network Nodes, please visit the Exchange Network website at <http://www.exchangenetwork.net>



Selected New Features



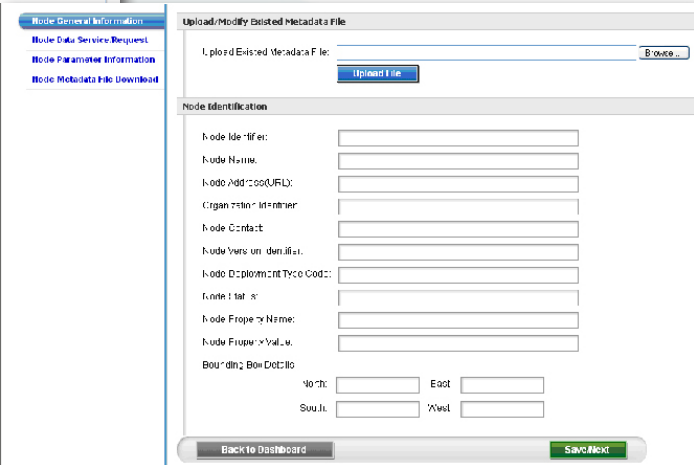
Enhanced Node Administration

The Node Administration Utility includes a new **Node Dashboard** that provides a **one-stop location to manage all Node activity**. This includes: Node Monitoring, Data Flow Management, an Embedded Node Client, Document Management, and Task Management. Each dashboard component can be drag & dropped or hidden to suit the preference of the Node or Data Flow Administrator currently logged in.

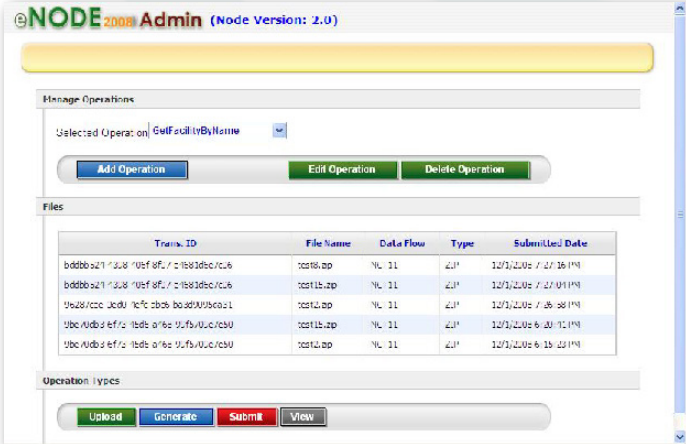
The e-Node Administration Utility has been improved to include a fully customizable Dashboard that provides one-stop management of Node activities

ENDS Support

The eNode provides Node Administrators with the ability to create a Service Registration Package for each data flow defined in the Node. These service registrations are stored as XML and are compatible with the Exchange Network Discovery Service, which allows you to **publish your data sharing services with the Exchange Network**.



Node Administrators can use the Service Registration page to create ENDS service registration packages



Review & Approve Module for Outbound Submissions

e-Node 2008 provides a new "Review & Approval" module, which **greatly extends the support for any outbound data flows such as WQX, AQS, RCRA, FRS**. Staff can now use the Review & Approve Module to review data prior to submission to EPA and initiate submission to EPA either manually or automatically. Node Admins can turn on or off the "Upload", "Generate", "View", and "Submit" steps and tie each step to a custom Node plug-in, giving unlimited control for the behavior of the entire outbound data flow process.

The "Review & Approve" module provides a new level of control over the behaviour of any outbound data flow

Please visit the eNode product Website for more information: <http://www.enfotech.com/enfoWebApp/pages/products/Node.aspx>



Address: 1368 How Lane North Brunswick, New Jersey 08902

Sales: 732.839.1688 (Tel) 732.214.8619 (Fax) sales@enfotech.com

Support: 732.839.1688x6 (Tel) tech@enfotech.com